

**Commensal-to-pathogen transition: One-single transposon insertion results in two pathoadaptive traits in *Escherichia coli* -macrophage interaction.**

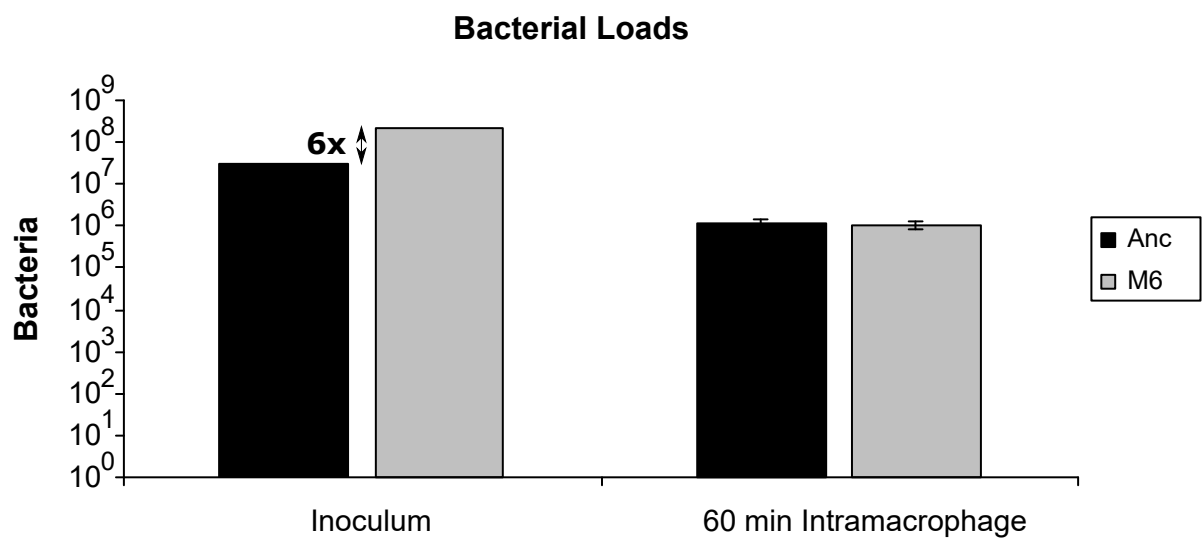
João T. Proença<sup>1</sup>, Duarte C. Barral<sup>2,\*</sup> and Isabel Gordo<sup>1,\*</sup>

<sup>1</sup>Instituto Gulbenkian de Ciência

<sup>2</sup>CEDOC, NOVA Medical School|Faculdade de Ciências Médicas, Universidade  
NOVA de Lisboa

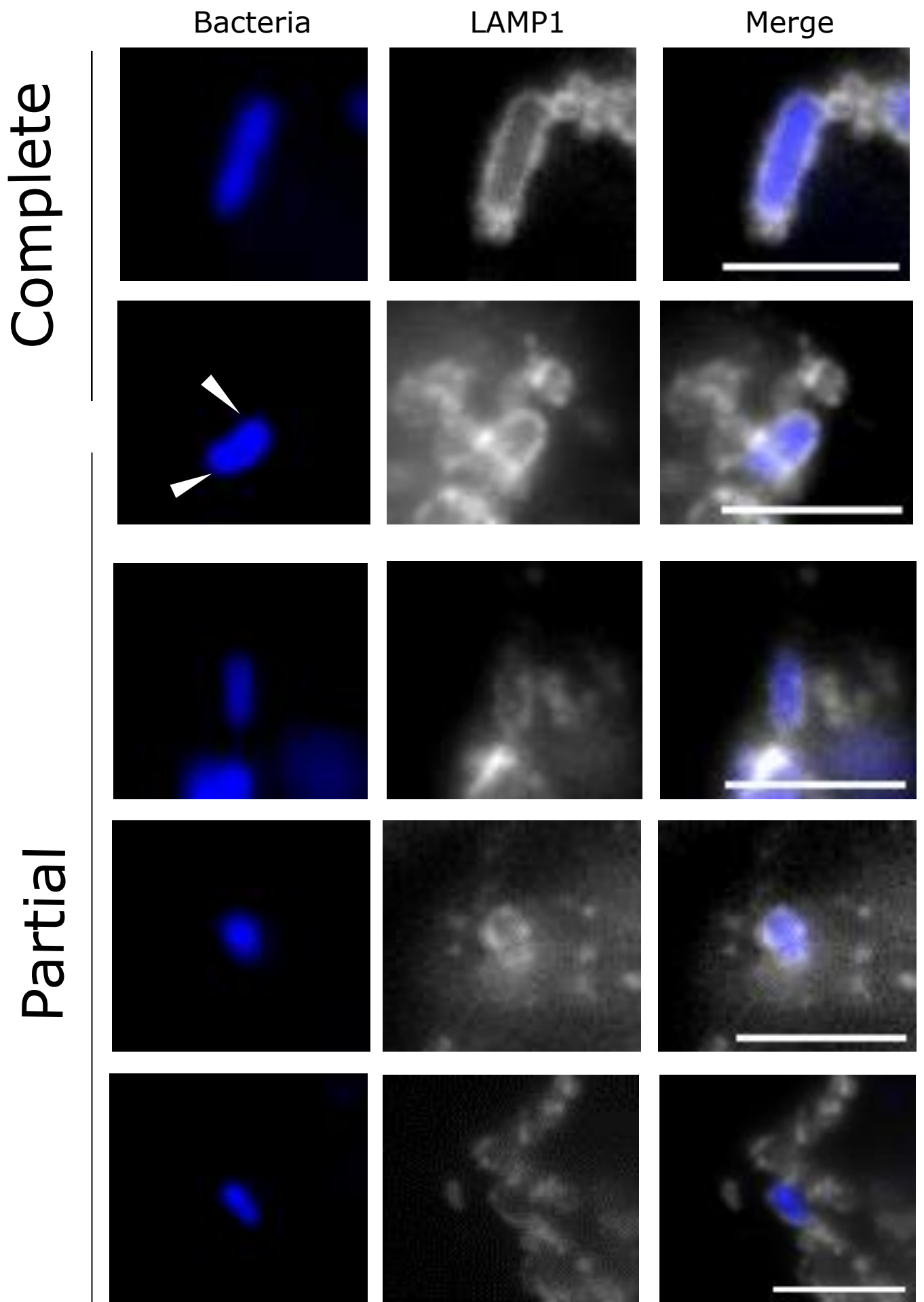
\*corresponding author: [igordo@igc.gulbenkian.pt](mailto:igordo@igc.gulbenkian.pt), [duarte.barral@nms.unl.pt](mailto:duarte.barral@nms.unl.pt)

Supplementary Figures



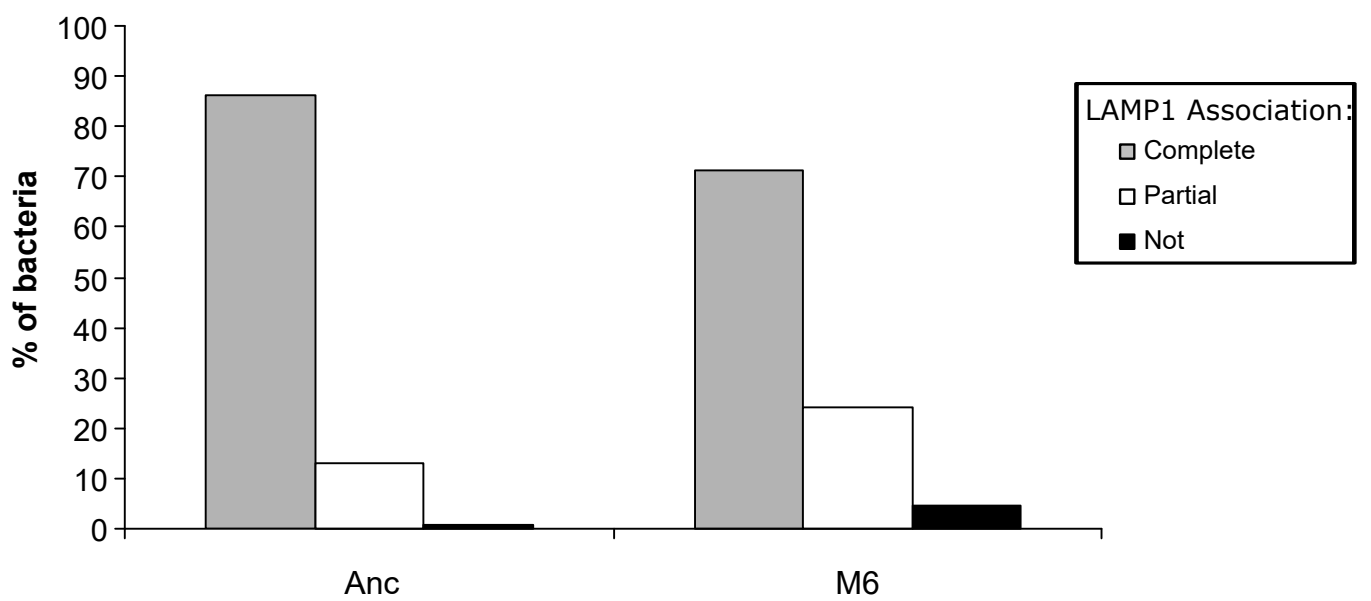
Supplementary Fig. S1 – **Quantification of intracellular M6 and Anc bacteria.**

Infection of  $3 \times 10^5$  MΦs with MOI of 50 for the Anc bacteria and 300 for the M6 bacteria resulted in the detection of similar numbers of intracellular bacteria.

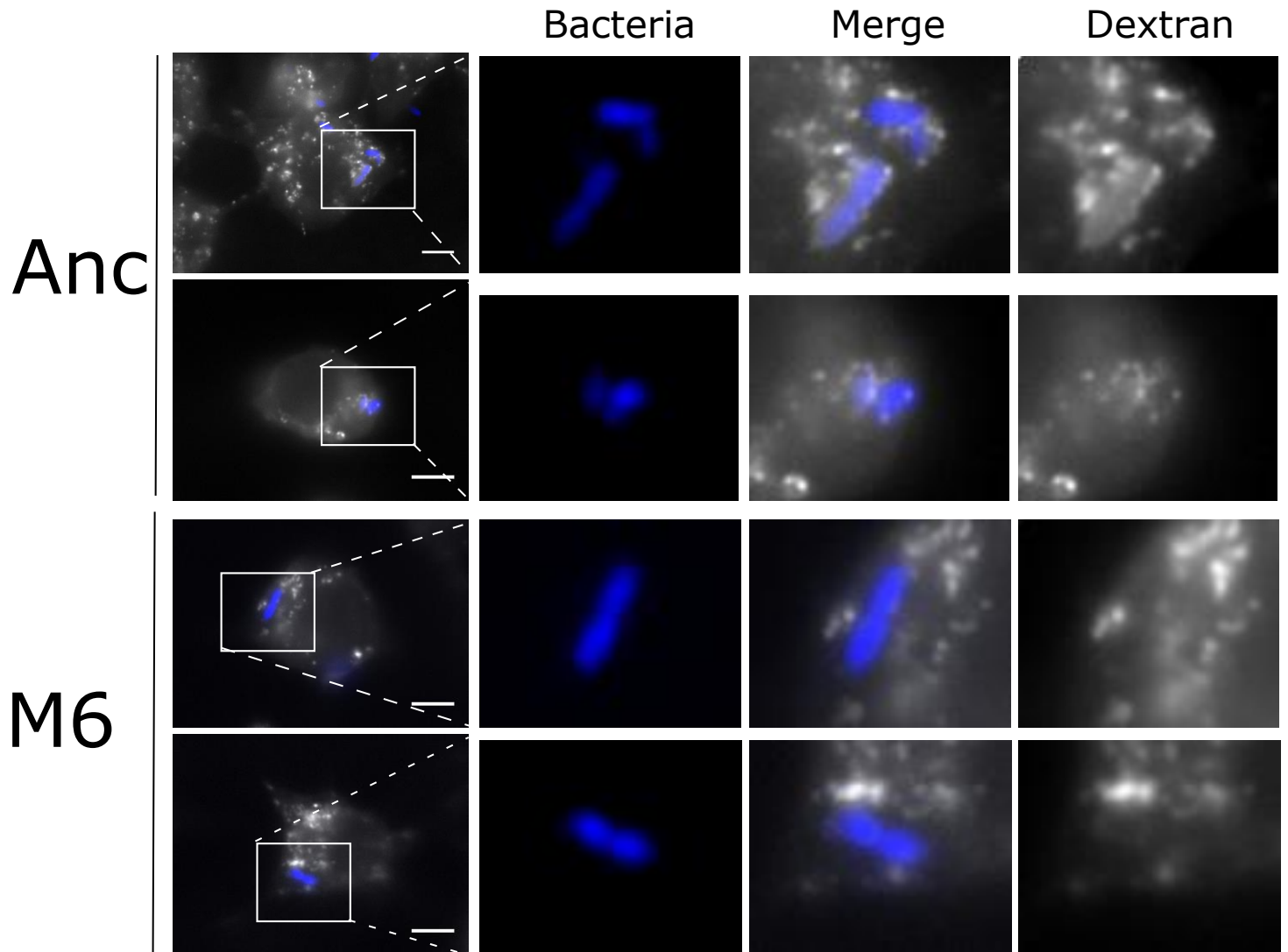


Supplementary Fig. S2 –**Representative images and their classification in terms of LAMP1 association.**

Images were taken 1 h post-infection with Anc strain . LAMP1 is shown in grey, DAPI in cyan and Anc bacteria in blue. Scale bar: 5  $\mu$ m.



Supplementary Fig. S3 –**Quantification of LAMP1 association in MΦs infected at a high MOI.** MΦs infected with a MOI of 960 for M6 and 80 for the Anc strain at 1 h post-infection revealed significantly different patterns of LAMP1 staining ( $P < 0.001$ , Fisher exact test).



Supplementary Fig. S4 –**Dextran-labelled lysosomes are readily detected in Anc-containing phagosomes at 1h post infection.**

Representative fluorescent images of MΦs labelled with dextran at 1 h post-infection with Anc or M6 bacteria. Bacteria are represented in blue and dextran is represented in grey. Scale bar: 5 μm.